



KITCHEN

**HANDLES**

collection



**HARDWARE**



style  
**317**  
brushed  
stainless













style  
**322**  
brushed  
nickel





# lip-pull

## stainless steel

Length	Order Code
50mm	347.050
100mm	347.100
200mm	347.200
300mm	347.300
400mm	347.400

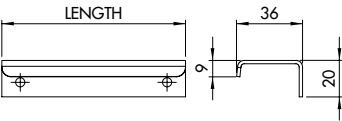
style  
**347**  
brushed  
stainless



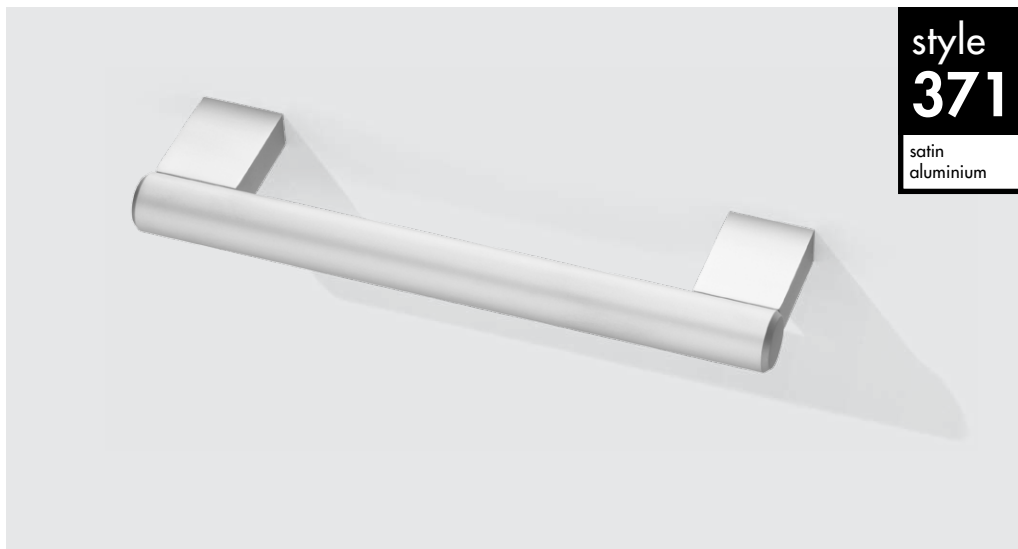
## stainless steel

Length	Order Code
50mm	347.056
100mm	347.106
200mm	347.206
300mm	347.306
400mm	347.406

style  
**347.6**  
matt  
black

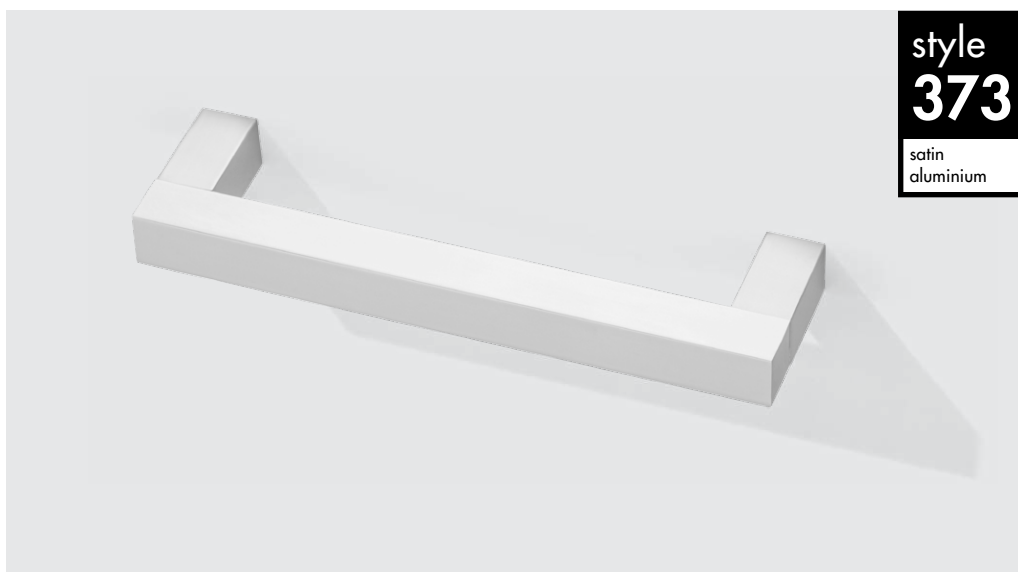
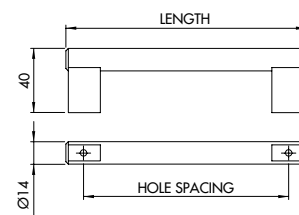






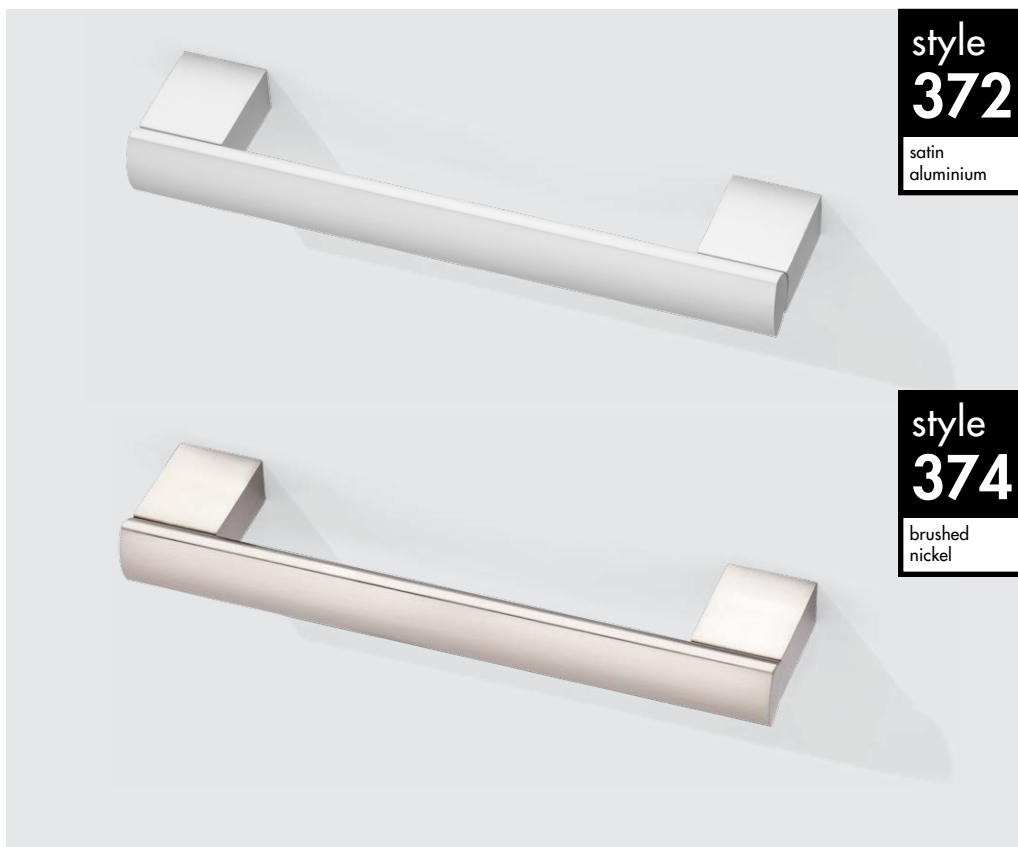
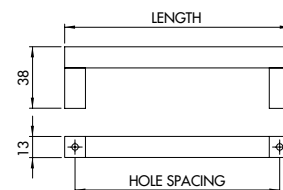
### Ø14mm, solid aluminium

Hole spacing	Length	Order Code
128mm	150mm	<b>371.128</b>
160mm	182mm	<b>371.160</b>
192mm	214mm	<b>371.192</b>
224mm	246mm	<b>371.224</b>
288mm	310mm	<b>371.288</b>
416mm	438mm	<b>371.416</b>



### 13x13mm, solid aluminium

Hole spacing	Length	Order Code
128mm	150mm	<b>373.128</b>
160mm	182mm	<b>373.160</b>
192mm	214mm	<b>373.192</b>
224mm	246mm	<b>373.224</b>
288mm	310mm	<b>373.288</b>
352mm	374mm	<b>373.352</b>
416mm	438mm	<b>373.416</b>

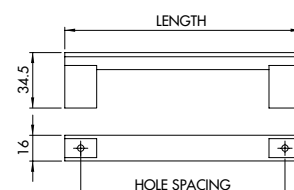


### solid aluminium

Hole spacing	Length	Order Code
128mm	150mm	<b>372.128</b>
160mm	182mm	<b>372.160</b>
192mm	214mm	<b>372.192</b>
224mm	246mm	<b>372.224</b>
288mm	310mm	<b>372.288</b>
352mm	374mm	<b>372.352</b>
416mm	438mm	<b>372.416</b>

### solid aluminium

Hole spacing	Length	Order Code
128mm	150mm	<b>374.128</b>
160mm	182mm	<b>374.160</b>
288mm	310mm	<b>374.288</b>
416mm	438mm	<b>374.416</b>

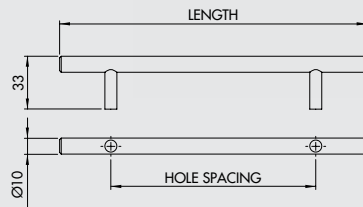


# stainless steel t-bar

## Ø10mm, solid stainless

Hole spacing	Length	Order Code
96mm	160mm	310.096
128mm	192mm	310.128
160mm	224mm	310.160
192mm	256mm	310.192
224mm	288mm	310.224
288mm	352mm	310.288
320mm	384mm	310.320
352mm	416mm	310.352
416mm	480mm	310.416

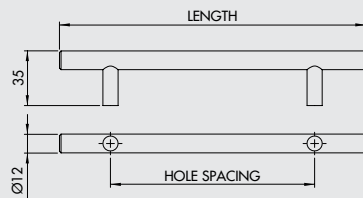
style  
**310**  
brushed  
stainless



## Ø12mm, solid stainless

Hole spacing	Length	Order Code
0mm	64mm	312.000
96mm	160mm	312.096
128mm	192mm	312.128
160mm	224mm	312.160
192mm	256mm	312.192
224mm	288mm	312.224
288mm	352mm	312.288
320mm	384mm	312.320
352mm	416mm	312.352
416mm	480mm	312.416
448mm	512mm	312.448
480mm	544mm	312.480
512mm	576mm	312.512
544mm	608mm	312.544
640mm	704mm	312.640
736mm	800mm	312.736
832mm	896mm	312.832

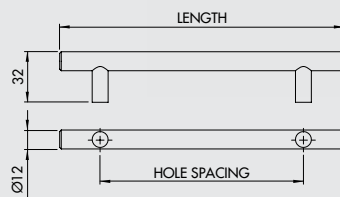
style  
**312**  
brushed  
stainless



## Ø12mm, hollow stainless

Hole spacing	Length	Order Code
96mm	146mm	318.096
128mm	178mm	318.128
160mm	210mm	318.160
224mm	274mm	318.224
288mm	338mm	318.288
352mm	402mm	318.352
416mm	466mm	318.416
480mm	530mm	318.480
544mm	594mm	318.544

style  
**318**  
brushed  
stainless







style  
**320**  
polished  
chrome

style  
**321**  
satin  
chrome

style  
**322**  
brushed  
nickel

# steel t-bar

## Ø12mm, solid steel

Hole spacing	Length	Order Code
96mm	160mm	<b>320.096</b>
128mm	192mm	<b>320.128</b>
160mm	224mm	<b>320.160</b>
192mm	256mm	<b>320.192</b>
224mm	288mm	<b>320.224</b>
288mm	352mm	<b>320.288</b>
352mm	416mm	<b>320.352</b>
416mm	480mm	<b>320.416</b>
480mm	544mm	<b>320.480</b>
512mm	576mm	<b>320.512</b>

## Ø12mm, solid steel

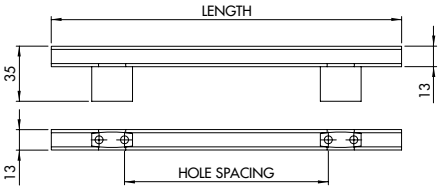
Hole spacing	Length	Order Code
96mm	160mm	<b>321.096</b>
128mm	192mm	<b>321.128</b>
160mm	224mm	<b>321.160</b>
192mm	256mm	<b>321.192</b>
224mm	288mm	<b>321.224</b>
288mm	352mm	<b>321.288</b>
352mm	416mm	<b>321.352</b>
416mm	480mm	<b>321.416</b>
480mm	544mm	<b>321.480</b>
512mm	576mm	<b>321.512</b>

## Ø12mm, solid steel

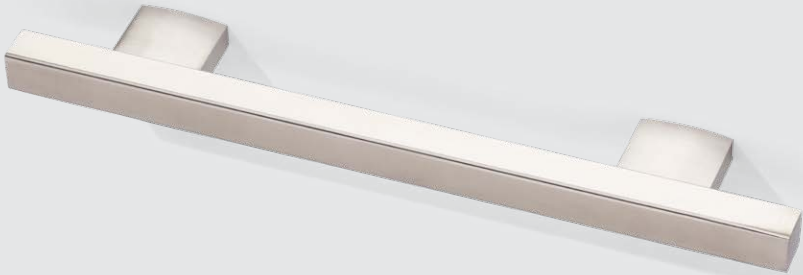
Hole spacing	Length	Order Code
96mm	160mm	<b>322.096</b>
128mm	192mm	<b>322.128</b>
160mm	224mm	<b>322.160</b>
192mm	256mm	<b>322.192</b>
224mm	288mm	<b>322.224</b>
288mm	352mm	<b>322.288</b>
320mm	384mm	<b>322.320</b>
352mm	416mm	<b>322.352</b>
416mm	480mm	<b>322.416</b>
448mm	512mm	<b>322.448</b>
480mm	544mm	<b>322.480</b>
512mm	576mm	<b>322.512</b>
544mm	608mm	<b>322.544</b>

12x12mm, hollow stainless

Hole spacing	Length	Order Code
32mm	75mm	315.032
96mm	186mm	315.096
128mm	218mm	315.128
160mm	250mm	315.160
192mm	282mm	315.192
224mm	314mm	315.224
288mm	378mm	315.288
320mm	410mm	315.320
352mm	442mm	315.352
448mm	538mm	315.448

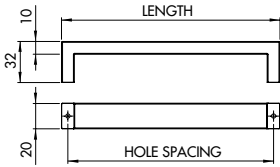


style  
**315**  
brushed  
stainless



20x10mm, hollow stainless

Hole spacing	Length	Order Code
96mm	106mm	317.096
128mm	138mm	317.128
160mm	170mm	317.160
224mm	234mm	317.224
288mm	298mm	317.288
416mm	426mm	317.416
544mm	554mm	317.544

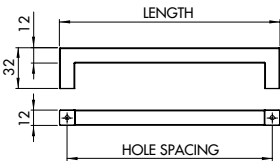


style  
**317**  
brushed  
stainless



12x12mm, hollow stainless

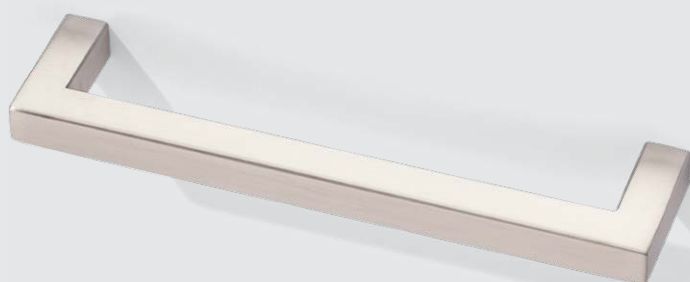
Hole spacing	Length	Order Code
96mm	108mm	316.096
128mm	140mm	316.128
160mm	172mm	316.160
224mm	236mm	316.224
288mm	300mm	316.288
352mm	364mm	316.352
416mm	428mm	316.416
480mm	492mm	316.480
544mm	556mm	316.544



style  
**316**  
brushed  
stainless

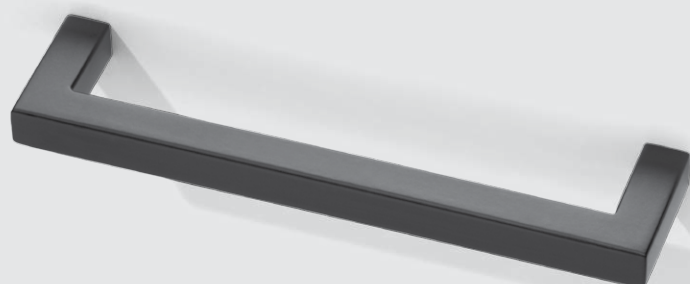






style  
**319**

brushed  
stainless

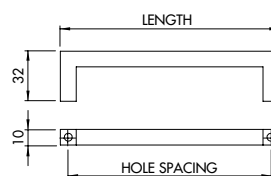


style  
**319.6**

matt  
black

### 10x10mm, hollow stainless

Hole spacing	Length	Order Code
96mm	106mm	<b>319.096</b>
128mm	138mm	<b>319.128</b>
160mm	170mm	<b>319.160</b>
224mm	234mm	<b>319.224</b>
288mm	298mm	<b>319.288</b>
352mm	362mm	<b>319.352</b>
416mm	426mm	<b>319.416</b>
480mm	490mm	<b>319.480</b>



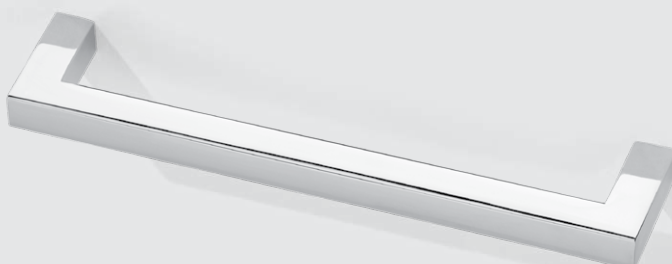
### 10x10mm, hollow stainless

Hole spacing	Length	Order Code
96mm	106mm	<b>319.696</b>
128mm	138mm	<b>319.628</b>
160mm	170mm	<b>319.660</b>
224mm	234mm	<b>319.624</b>
288mm	298mm	<b>319.688</b>
352mm	362mm	<b>319.652</b>
416mm	426mm	<b>319.616</b>
480mm	490mm	<b>319.680</b>



style  
**345**

brushed  
nickel

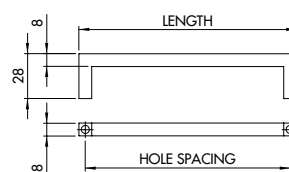


style  
**346**

polished  
chrome

### 8x8mm, solid zinc alloy

Hole spacing	Length	Order Code
96mm	104mm	<b>345.096</b>
128mm	136mm	<b>345.128</b>
160mm	168mm	<b>345.160</b>
224mm	232mm	<b>345.224</b>
256mm	264mm	<b>345.256</b>
320mm	328mm	<b>345.320</b>
448mm	456mm	<b>345.448</b>

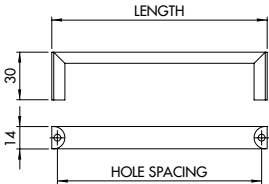


### 8x8mm, solid zinc alloy

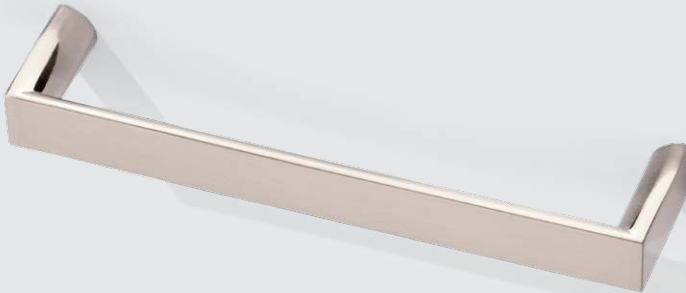
Hole spacing	Length	Order Code
96mm	104mm	<b>346.096</b>
128mm	136mm	<b>346.128</b>
160mm	168mm	<b>346.160</b>
224mm	232mm	<b>346.224</b>
256mm	264mm	<b>346.256</b>
320mm	328mm	<b>346.320</b>
448mm	456mm	<b>346.448</b>

14mm wide, solid zinc alloy

Hole spacing	Length	Order Code
128mm	135mm	336.128
160mm	167mm	336.160



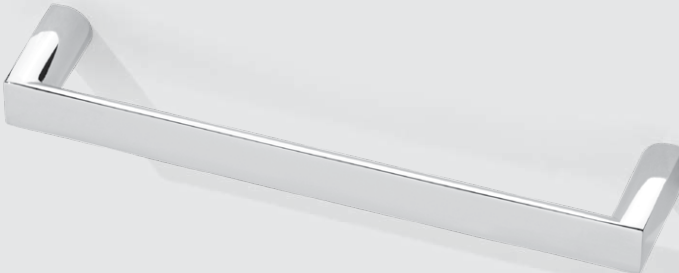
style  
**336**  
brushed  
nickel



12mm wide, solid zinc alloy

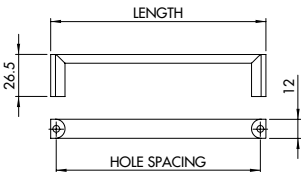
Hole spacing	Length	Order Code
96mm	104mm	342.096
128mm	136mm	342.128
160mm	168mm	342.160
224mm	232mm	342.224
288mm	296mm	342.288
320mm	328mm	342.320

style  
**342**  
polished  
chrome

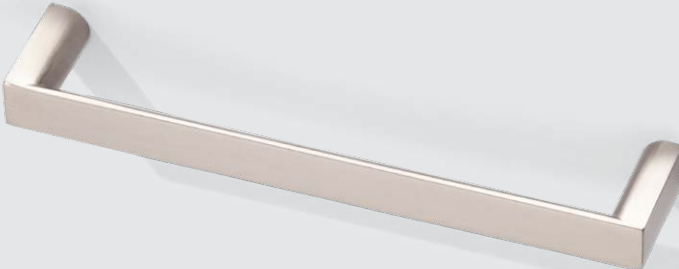


12mm wide, solid zinc alloy

Hole spacing	Length	Order Code
96mm	104mm	343.096
128mm	136mm	343.128
160mm	168mm	343.160
224mm	232mm	343.224
288mm	296mm	343.288
320mm	328mm	343.320



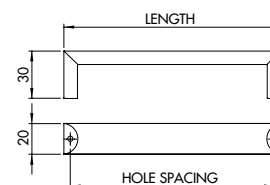
style  
**343**  
brushed  
nickel





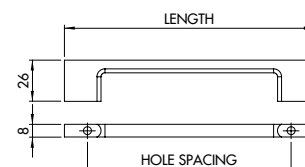
## 20mm wide, solid aluminium

Hole spacing	Length	Order Code
96mm	104mm	<b>378.096</b>
128mm	136mm	<b>378.128</b>
160mm	168mm	<b>378.160</b>
256mm	264mm	<b>378.256</b>



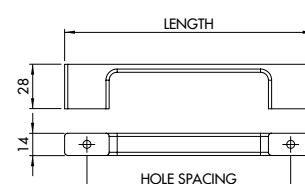
## zinc alloy

Hole spacing	Length	Order Code
96mm	124mm	<b>334.096</b>
128mm	156mm	<b>334.128</b>
160mm	188mm	<b>334.160</b>
192mm	220mm	<b>334.192</b>
256mm	284mm	<b>334.256</b>
320mm	348mm	<b>334.320</b>



## zinc alloy

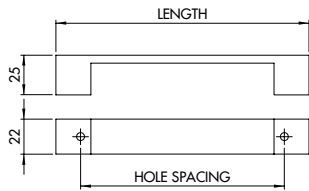
Hole spacing	Length	Order Code
128mm	155mm	<b>340.128</b>
160mm	185mm	<b>340.160</b>



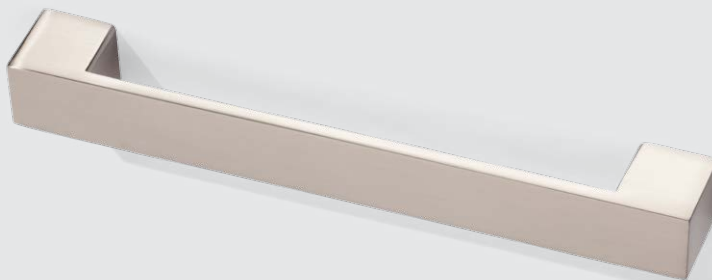


zinc alloy

Hole spacing	Length	Order Code
128mm	158mm	337.128
160mm	190mm	337.160
192mm	222mm	337.192

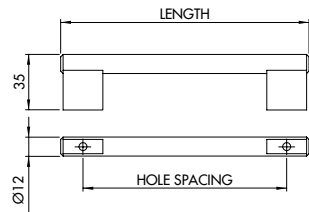


style  
**337**  
brushed  
nickel



steel & zinc alloy

Hole spacing	Length	Order Code
96mm	120mm	323.096
128mm	152mm	323.128
160mm	184mm	323.160
192mm	216mm	323.192
224mm	248mm	323.224
288mm	312mm	323.288
352mm	376mm	323.352
416mm	440mm	323.416
448mm	472mm	323.448
480mm	504mm	323.480
512mm	536mm	323.512

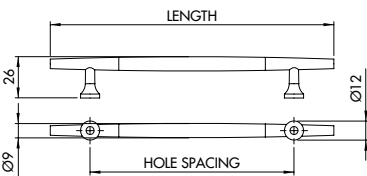


style  
**323**  
brushed  
nickel



solid zinc alloy

Hole spacing	Length	Order Code
96mm	146mm	351.096
128mm	178mm	351.128



style  
**351**  
brushed &  
polished  
nickel



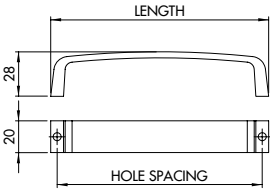


**solid zinc alloy**

Hole spacing	Length	Order Code
128mm	136mm	<b>352.028</b>
160mm	168mm	<b>352.060</b>

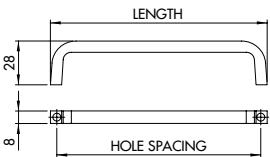
**solid zinc alloy**

Hole spacing	Length	Order Code
128mm	136mm	<b>352.128</b>
160mm	168mm	<b>352.160</b>



**8x8mm, solid stainless**

Hole spacing	Length	Order Code
96mm	100mm	<b>313.096</b>
128mm	132mm	<b>313.128</b>
160mm	164mm	<b>313.160</b>
192mm	196mm	<b>313.192</b>
224mm	228mm	<b>313.224</b>



zinc alloy

Hole spacing	Length	Order Code
128mm	190mm	332.028
256mm	314mm	332.056

style  
332.0

polished  
chrome

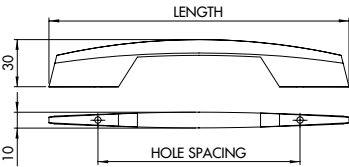
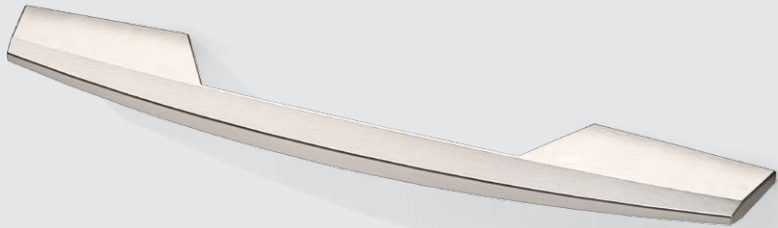


zinc alloy

Hole spacing	Length	Order Code
128mm	190mm	332.128
256mm	314mm	332.256

style  
332.1

brushed  
nickel

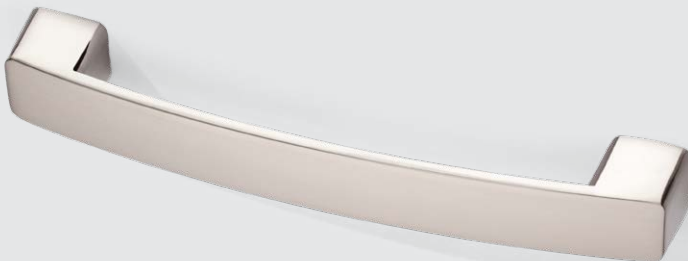


zinc alloy

Hole spacing	Length	Order Code
128mm	159mm	348.128
160mm	191mm	348.160
192mm	225mm	348.192

style  
348

brushed  
nickel

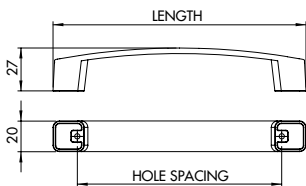


zinc alloy

Hole spacing	Length	Order Code
128mm	159mm	349.128
160mm	191mm	349.160
192mm	225mm	349.192

style  
349

polished  
chrome





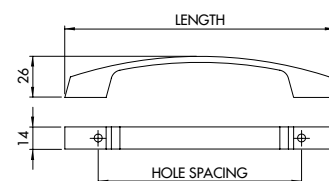


style  
**335**

brushed  
nickel

#### zinc alloy

Hole spacing	Length	Order Code
128mm	170mm	<b>335.128</b>
160mm	206mm	<b>335.160</b>

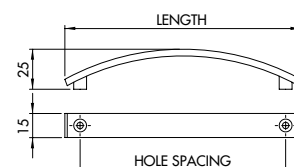


style  
**330**

brushed  
nickel

#### zinc alloy

Hole spacing	Length	Order Code
96mm	117mm	<b>330.096</b>
128mm	149mm	<b>330.128</b>
160mm	181mm	<b>330.160</b>
224mm	246mm	<b>330.224</b>



style  
**328.0**

polished  
chrome

style  
**328.1**

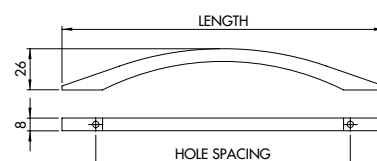
brushed  
nickel

#### solid zinc alloy

Hole spacing	Length	Order Code
160mm	203mm	<b>328.060</b>
320mm	377mm	<b>328.032</b>

#### solid zinc alloy

Hole spacing	Length	Order Code
160mm	203mm	<b>328.160</b>
320mm	377mm	<b>328.320</b>



solid aluminium

Hole spacing	Length	Order Code
128mm	149mm	376.128
160mm	186mm	376.160
224mm	255mm	376.224
320mm	364mm	376.320

style  
376

polished  
chrome

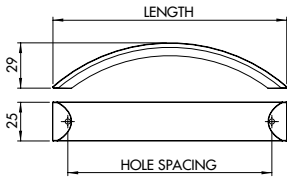


solid aluminium

Hole spacing	Length	Order Code
128mm	149mm	377.128
160mm	186mm	377.160
224mm	255mm	377.224
320mm	364mm	377.320

style  
377

brushed  
nickel



solid zinc alloy

Hole spacing	Length	Order Code
128mm	140mm	329.028

style  
329.0

polished  
chrome

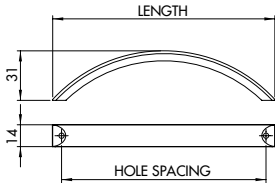


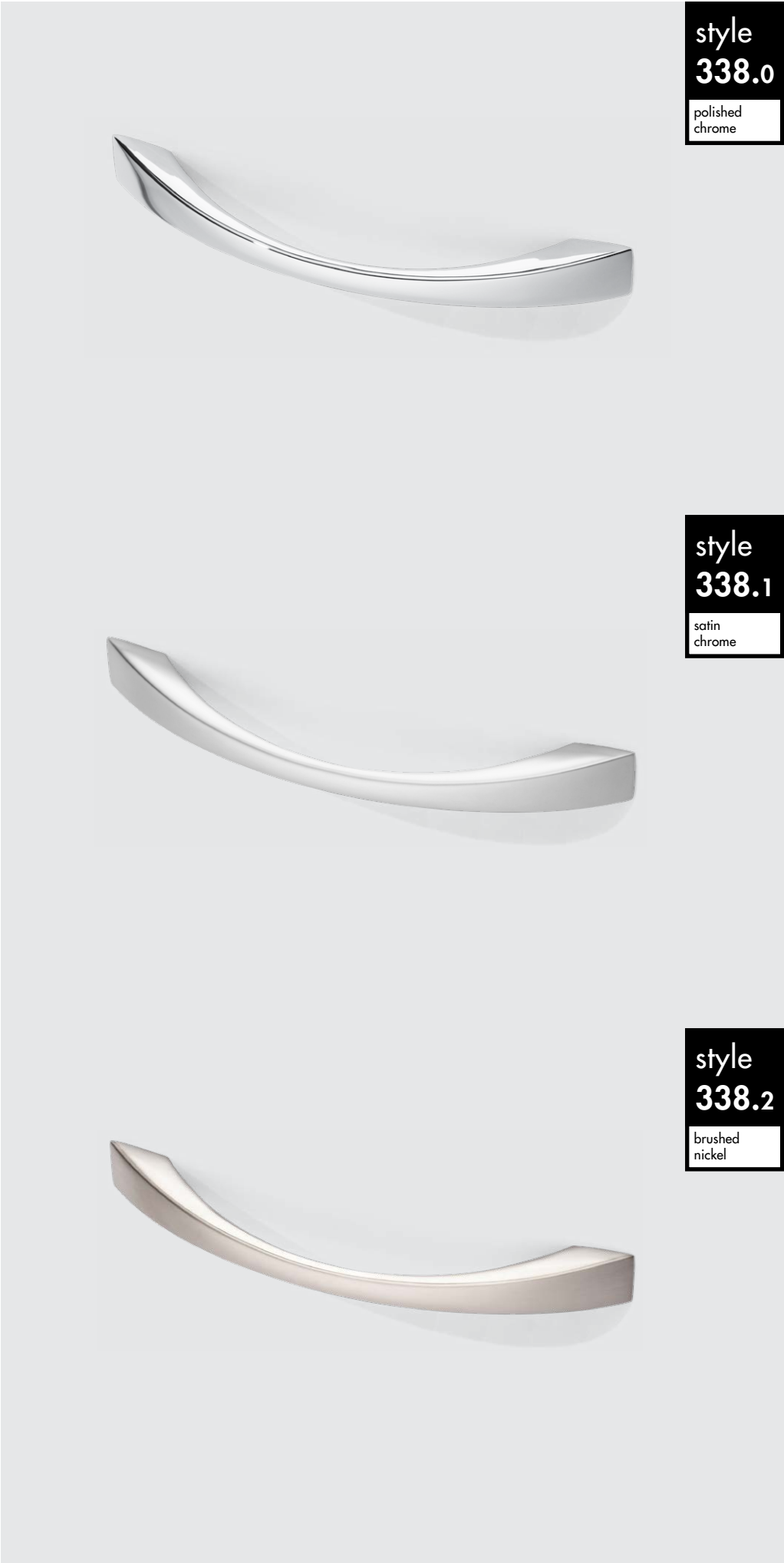
solid zinc alloy

Hole spacing	Length	Order Code
128mm	140mm	329.228

style  
329.2

brushed  
nickel





style  
**338.0**

polished  
chrome

style  
**338.1**

satin  
chrome

style  
**338.2**

brushed  
nickel

**zinc alloy**

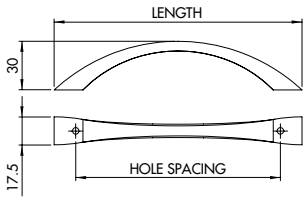
Hole spacing	Length	Order Code
128mm	154mm	<b>338.028</b>

**zinc alloy**

Hole spacing	Length	Order Code
128mm	154mm	<b>338.128</b>

**zinc alloy**

Hole spacing	Length	Order Code
128mm	154mm	<b>338.228</b>





# slim bow

## solid zinc alloy

Hole spacing	Length	Order Code
96mm	114mm	300.096
128mm	152mm	300.028

style  
300.0

polished  
chrome



## solid zinc alloy

Hole spacing	Length	Order Code
96mm	114mm	300.196
128mm	152mm	300.128

style  
300.1

satin  
chrome



## solid zinc alloy

Hole spacing	Length	Order Code
96mm	114mm	300.296
128mm	152mm	300.228

style  
300.2

brushed  
nickel



## solid zinc alloy

Hole spacing	Length	Order Code
96mm	114mm	300.396
128mm	152mm	300.328

style  
300.3

gold

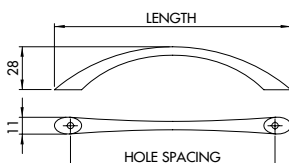


## solid zinc alloy

Hole spacing	Length	Order Code
96mm	114mm	300.496
128mm	152mm	300.428

style  
300.4

black  
nickel





style  
302.0

polished  
chrome

style  
302.1

satin  
chrome

style  
302.2

brushed  
nickel

style  
302.4

black  
nickel

bow

Ø10mm solid steel

Hole spacing	Length	Order Code
96mm	114mm	302.096
128mm	152mm	302.028
160mm	192mm	302.060
224mm	264mm	302.024
288mm	340mm	302.088

Ø10mm solid steel

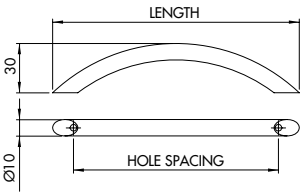
Hole spacing	Length	Order Code
96mm	114mm	302.196
128mm	152mm	302.128
160mm	192mm	302.160
224mm	264mm	302.124
288mm	340mm	302.188

Ø10mm solid steel

Hole spacing	Length	Order Code
96mm	114mm	302.296
128mm	152mm	302.228
160mm	192mm	302.260
224mm	264mm	302.224
288mm	340mm	302.288

Ø10mm solid steel

Hole spacing	Length	Order Code
96mm	114mm	302.496
128mm	152mm	302.428
160mm	192mm	302.460



# d-end

## Ø10mm solid steel

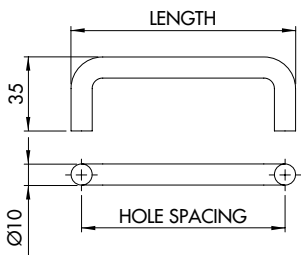
Hole spacing	Length	Order Code
96mm	106mm	314.096
128mm	138mm	314.028
160mm	170mm	314.060
224mm	234mm	314.024
288mm	298mm	314.088

## Ø10mm solid steel

Hole spacing	Length	Order Code
96mm	106mm	314.196
128mm	138mm	314.128
160mm	170mm	314.160
224mm	234mm	314.124
288mm	298mm	314.188

## Ø10mm solid steel

Hole spacing	Length	Order Code
96mm	106mm	314.296
128mm	138mm	314.228
160mm	170mm	314.260
224mm	234mm	314.224
288mm	298mm	314.288



style  
314.0

polished  
chrome



style  
314.1

satin  
chrome



style  
314.2

brushed  
nickel



# recessed handles

recessed  
**032**

polished  
chrome

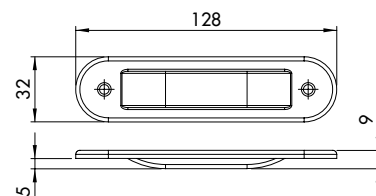


recessed  
**232**

brushed  
nickel

**zinc alloy**

Hole size	Size	Order Code
80x22x5mm	128x32mm	<b>341.032</b>



**zinc alloy**

Hole size	Size	Order Code
80x22x5mm	128x32mm	<b>341.232</b>

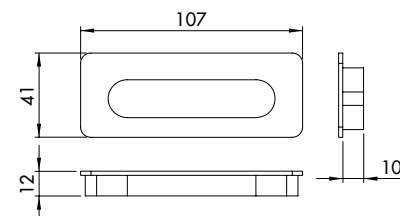
recessed  
**107**

brushed  
nickel



**zinc alloy**

Hole size	Size	Order Code
103x30x10mm	107x41mm	<b>341.107</b>



recessed  
**035**

brushed  
nickel



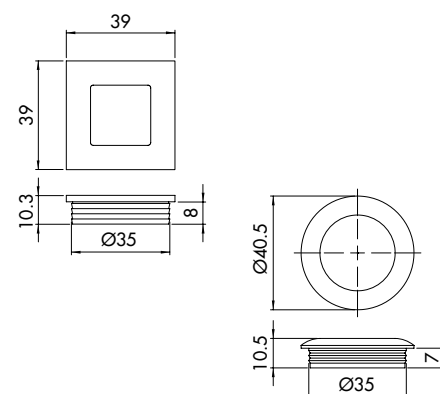
recessed  
**135**

brushed  
nickel



**square, zinc alloy**

Hole size	Size	Order Code
Ø35x8mm	39x39mm	<b>341.035</b>



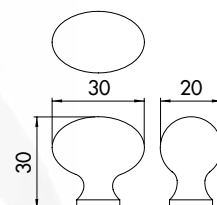
**round, zinc alloy**

Hole size	Size	Order Code
Ø35x7mm	Ø40mm	<b>341.135</b>



knob  
10

# football knobs



## satin chrome

Order Code 380.110

## gold

Order Code 380.310

## polished chrome

Order Code 380.010

## brushed nickel

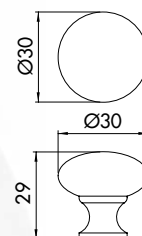
Order Code 380.210

## black nickel

Order Code 380.410

knob  
20

# mushroom knobs



## satin chrome

Order Code 380.120

## gold

Order Code 380.320

## polished chrome

Order Code 380.020

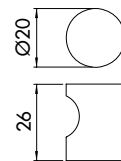
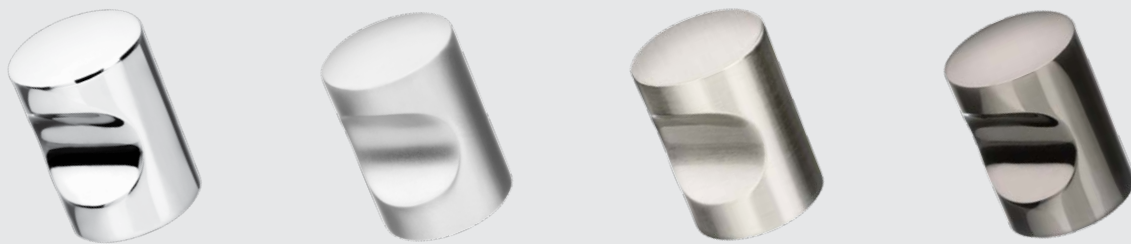
## brushed nickel

Order Code 380.220

## black nickel

Order Code 380.420

**knob  
40**



**polished chrome**

Order Code **380.040**

**satin chrome**

Order Code **380.140**

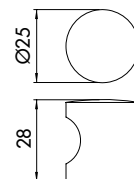
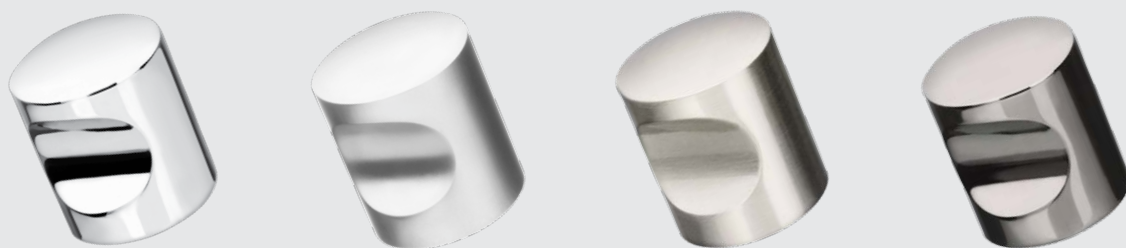
**brushed nickel**

Order Code **380.240**

**black nickel**

Order Code **380.440**

**knob  
50**



**polished chrome**

Order Code **380.050**

**satin chrome**

Order Code **380.150**

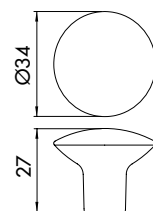
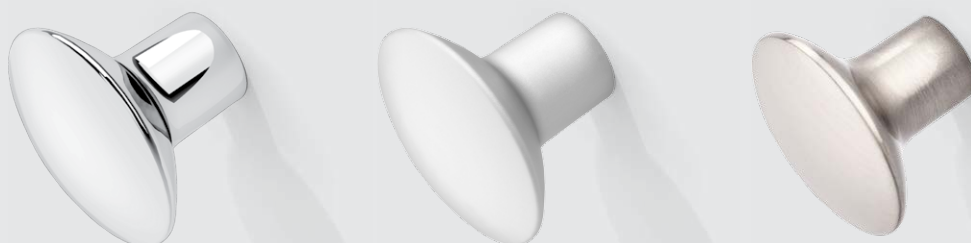
**brushed nickel**

Order Code **380.250**

**black nickel**

Order Code **380.450**

**knob  
60**



**polished chrome**

Order Code **380.060**

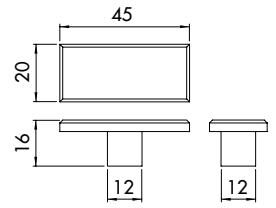
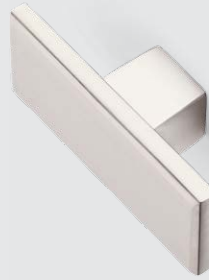
**satin chrome**

Order Code **380.160**

**brushed nickel**

Order Code **380.260**

**knob  
70**



**polished chrome**

Order Code **380.070**

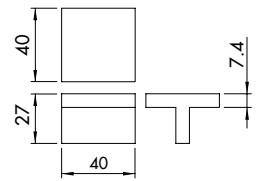
**satin chrome**

Order Code **380.170**

**brushed nickel**

Order Code **380.270**

**knob  
74**



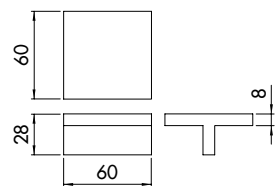
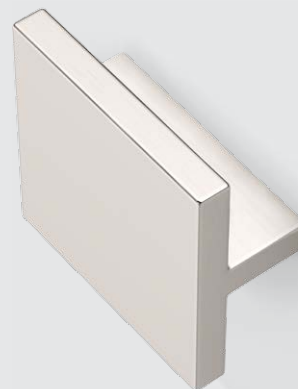
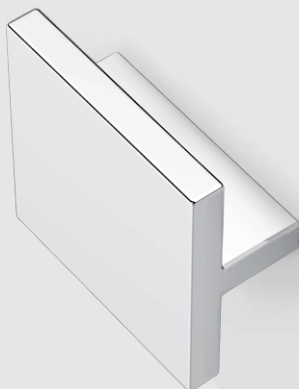
**polished chrome**

Order Code **380.074**

**brushed nickel**

Order Code **380.274**

**knob  
76**



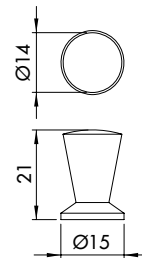
**polished chrome**

Order Code **380.076**

**brushed nickel**

Order Code **380.276**

**knob  
80**



**polished chrome**

Order Code **380.080**

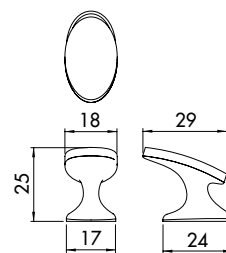
**satin chrome**

Order Code **380.180**

**brushed nickel**

Order Code **380.280**

**knob  
100**



**polished chrome**

Order Code **381.100**

**brushed nickel**

Order Code **381.102**

**knob  
110**



**knob  
111**

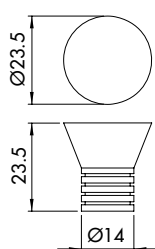


**knob  
112**



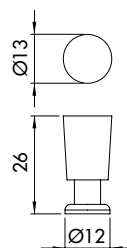
**brushed nickel**

Order Code **381.010**



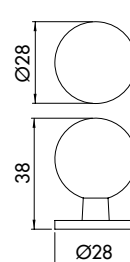
**polished chrome**

Order Code **381.011**

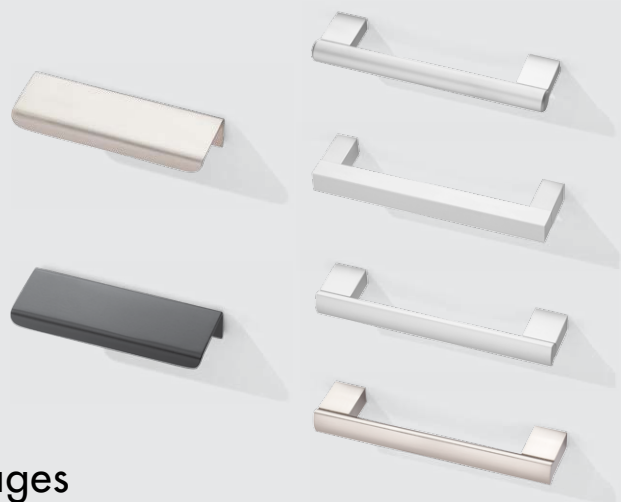


**brushed nickel**

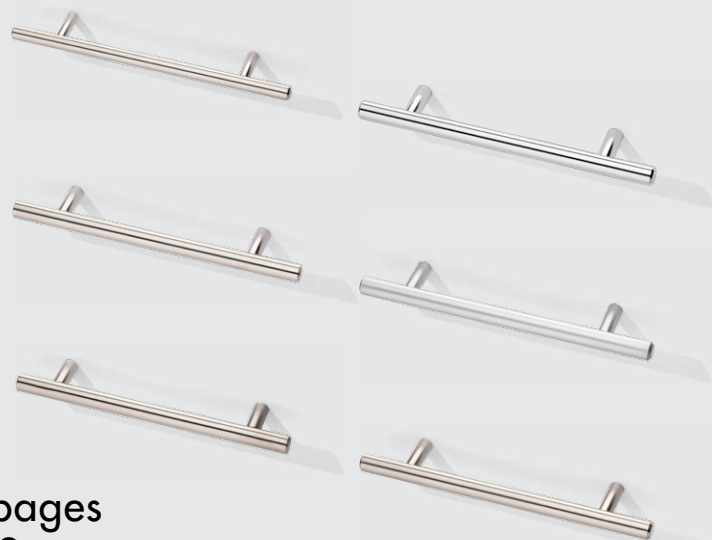
Order Code **381.012**



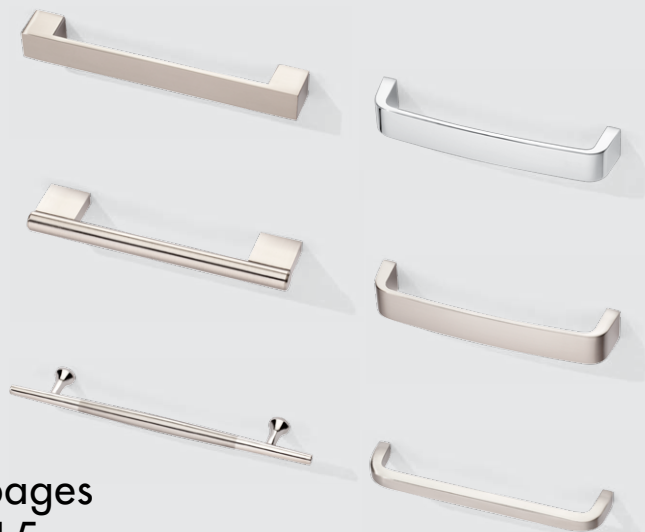
pages  
7 –  
8



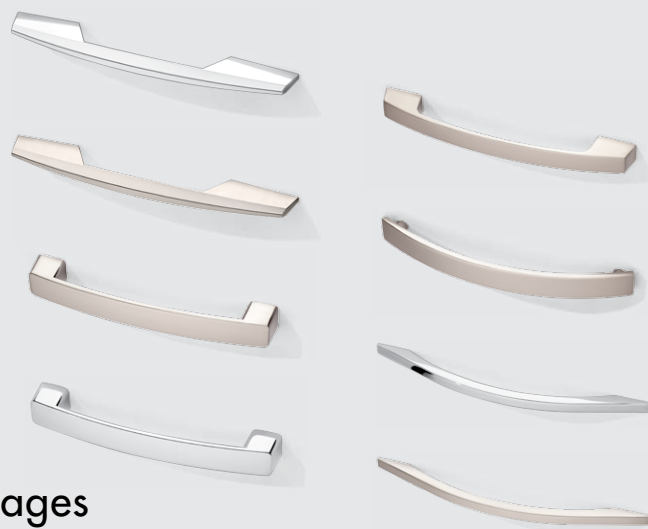
pages  
9 –  
10



pages  
15 –  
16



pages  
17 –  
18



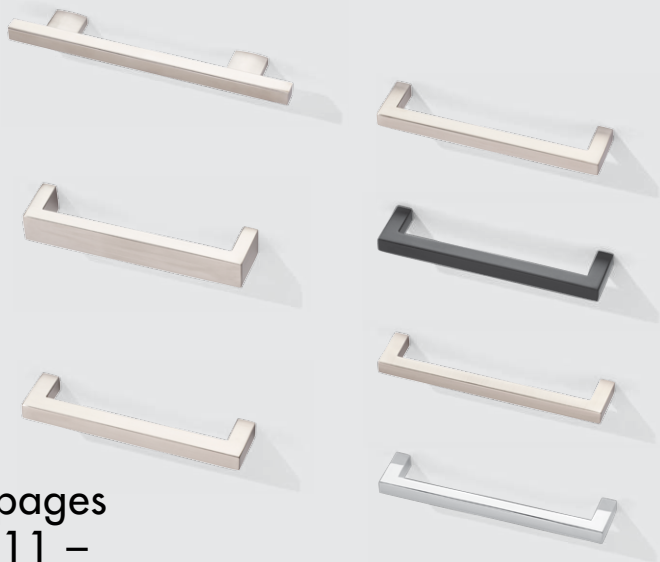
pages  
23 –  
24



pages  
25 –  
26







pages  
11 –  
12



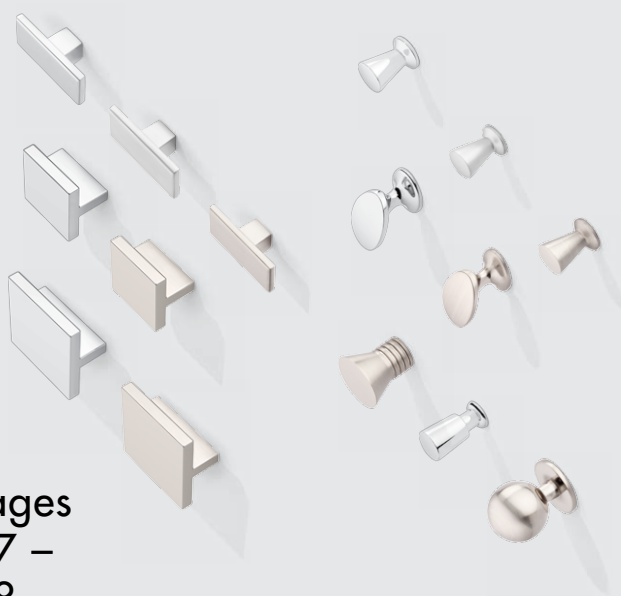
pages  
13 –  
14



pages  
19 –  
20



pages  
21 –  
22



pages  
27 –  
28



wthardware.com.au

2 / 191-195 Greens Rd  
(Greens Road Business Park)  
Dandenong South VIC 3175

(03) 9792 0407  
(03) 9792 0408 (fax)  
sales@wthardware.com.au



**HARDWARE**